

Headquarters Laboratory

P.O. Box 670
Collinsville, MS 39325
Office: (601) 626-1100
Fax: (601) 626-1122



Florida Laboratory

201 Douglas Avenue, Suite A
Dunedin, FL 34698
Office: (727) 253-4991
Fax (727) 953-7849

Ron Smith & Associates, Inc.

Testing Division

Toll Free: 1-866-832-6772 | www.RonSmithandAssociates.com

Email: testing@ronsmithandassociates.com

Summary Report

Fall 2016 Tenprint Comparison Proficiency Test #16202

Issued: December 1, 2016

On September 12, 2016, Ron Smith and Associates, Inc. (RS&A) shipped the 2016 Fall Tenprint Proficiency Test #16202. Participants were required to submit their responses no later than November 14, 2016, in order for them to be included in this summary report.

A total of 5 tests were ordered and shipped, with 2 participants returning their responses. The test was provided in both digital and hard copy format and included twenty pattern recognition prints, three sets of known fingerprints for comparison as a “pre-sentencing pack”, two single-inked latent prints on warrants of arrest/deportation for comparison to known fingerprint cards, and five side-by-side “AFIS” comparisons.

The results presented in this report reflect whether or not the participants’ submitted results agree or disagree with the assigned values, garnered from pre-distribution testing and outlined in **The Manufacturer’s Report** (Appendix 1). The primary purpose of a Summary Report is to provide an overall documentation of all the submitted responses. It is RS&A’s intention to go a step further and provide more meaningful statistical results by analyzing the submitted responses in relationship to the demographics obtained from each of the examiners participating in this proficiency test. All results and statistics for Test #16202 will be outlined through graphs and charts found in the remainder of this report.

Prior to distribution of this test, all of the expected responses were determined to be either “Identification” or “Exclusion”; however, we are aware that some agencies allow for a conclusion of “Inconclusive” in their casework. In designing this Proficiency Test, there was no intention to force a participant to render a conclusion which goes beyond their considered opinion. To satisfy this option, participants were allowed to enter “Inconclusive” as a response. Due to the fact that a participant’s “Inconclusive” response does not meet the assigned values, it will appear as an inconsistent response in the summary report and be incorporated as such in the statistical analysis. It will be up to each agency to decide if the participant’s “Inconclusive” response qualifies as being acceptable under their policies and procedures.

RS&A strives to maintain the confidentiality of all of its clients and participants. All results are obtained and published using randomly generated test codes. RS&A will not release the identity of any participant without the written consent of the participant and/or the agency involved.

For any additional information, please contact the Tenprint Proficiency Test Coordinator at testing@ronsmithandassociates.com or call toll free at 1-866-832-6772.

Appendix 1

Test Manufacturer's Information

Fall 2016 Tenprint Proficiency Test #16202

This test consisted of four parts: pattern recognition, comparison of multiple tenprint cards, comparison of single inked fingerprints to tenprint cards, and side-by-side comparisons of unknown to known fingerprints. The assigned values for each part of the test are as follows:

Part 1: Pattern Recognition

Image #	Pattern Type
1	Right Slant Loop
2	Arch
3	Right Slant Loop
4	Whorl
5	Whorl
6	Whorl
7	Right Slant Loop
8	Whorl
9	Left Slant Loop
10	Left Slant Loop
11	Right Slant Loop
12	Whorl
13	Right Slant Loop
14	Whorl
15	Left Slant Loop
16	Whorl
17	Whorl
18	Left Slant Loop
19	Left Slant Loop
20	Right Slant Loop

Part 2: Pre-Sentencing Packet

The following are the fingerprints of the same person:

“Most Recent Conviction”, “Prior Conviction #1”, and “Prior Conviction #2”

Part 3: Warrants of Removal/Deportation

What can you conclude about the fingerprint on Warrant #1?

The fingerprint on Warrant #1 was made by the same person whose fingerprints appear on the fingerprint card bearing the name "Jabari Makena".

What can you conclude about the fingerprint on Warrant #2?

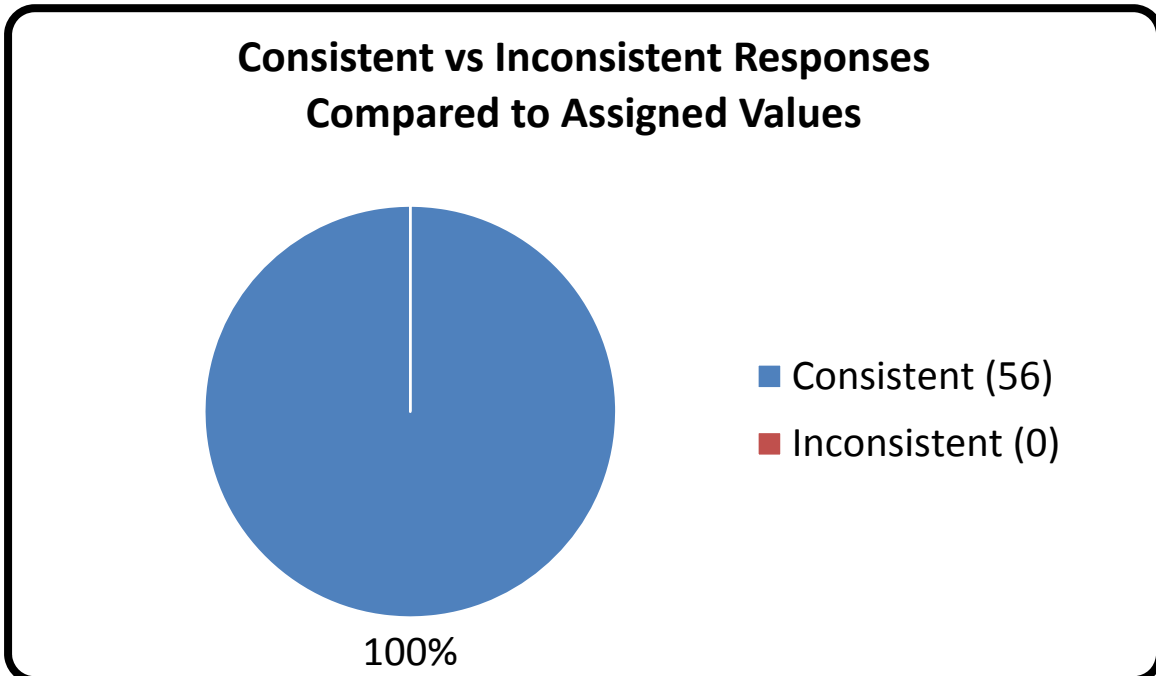
The fingerprint on Warrant #2 was not made by the same person whose fingerprints appear on the fingerprint card bearing the name "Ahmed Haddad".

Part 4: AFIS Side-by-Side Comparisons

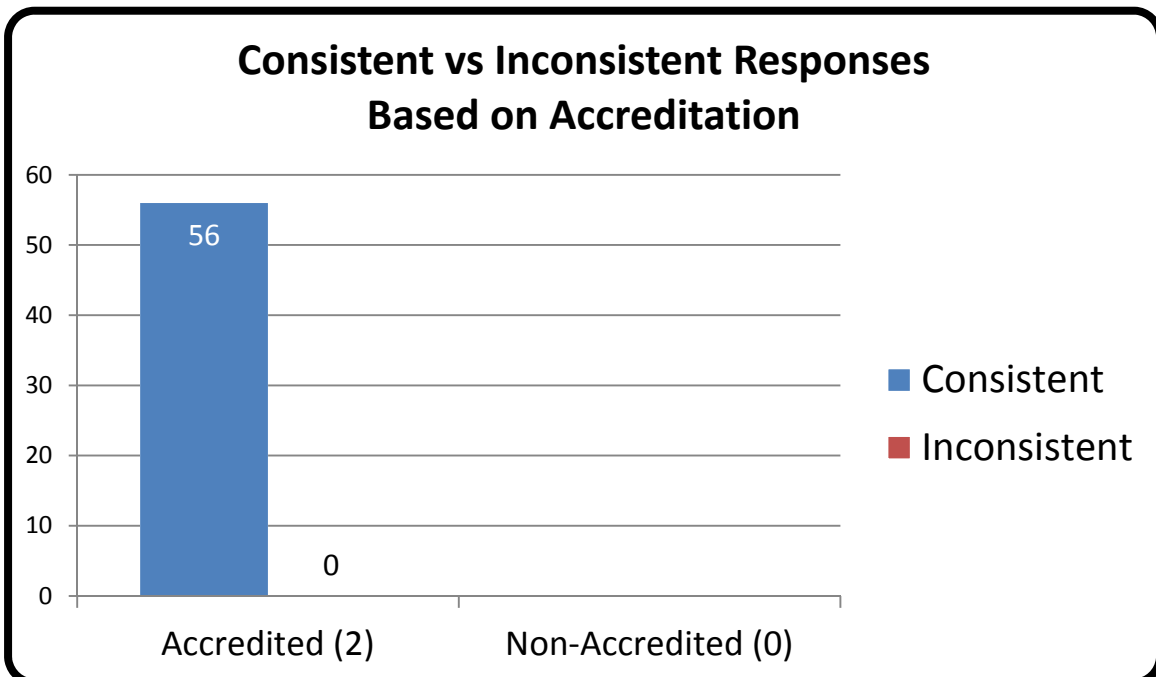
Comparison #	Conclusion
1	Identification
2	Exclusion
3	Identification
4	Identification
5	Exclusion

The test was provided in hard copy photograph and/or digital image formats. The assigned values were determined through the ground truth information and verified through unanimous agreement during pre-distribution testing.

Appendix 2

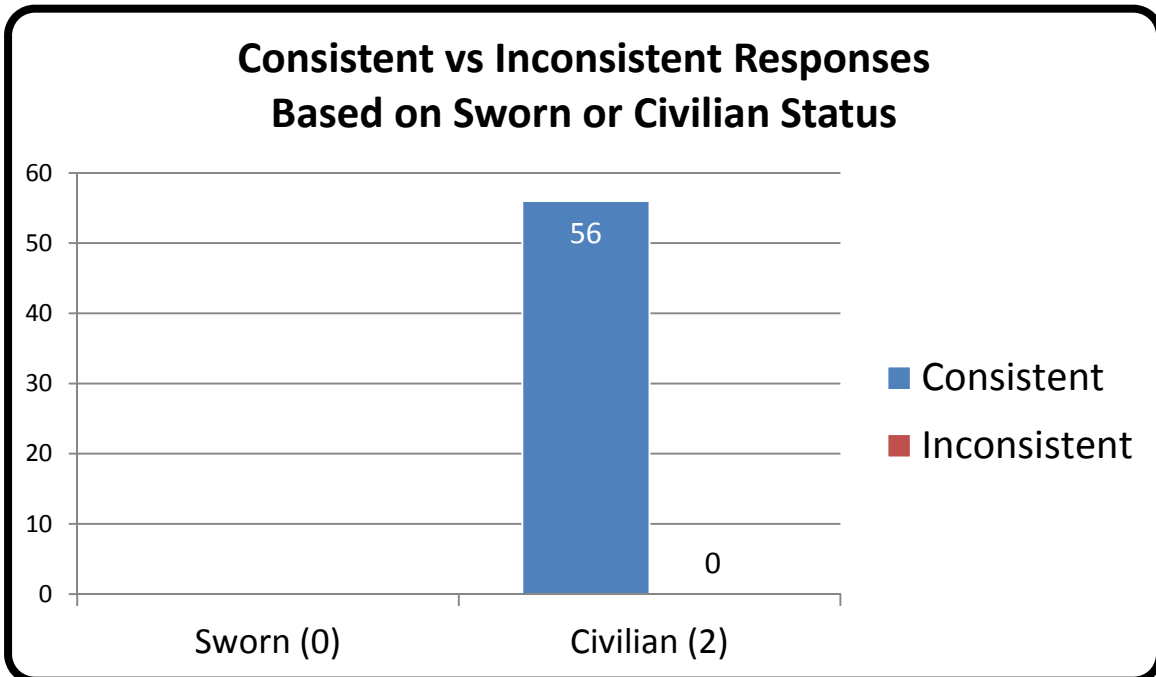


Appendix 3

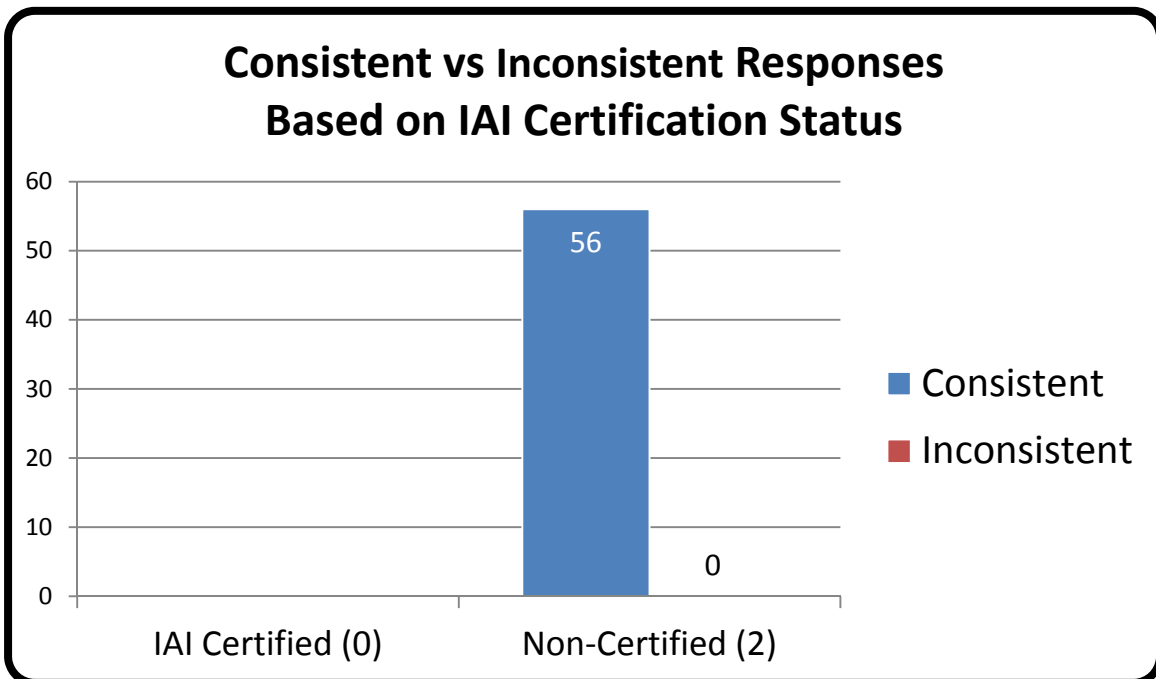


*For further information, please read **Manufacturer's Additional Observations** on the final page of this report.

Appendix 4



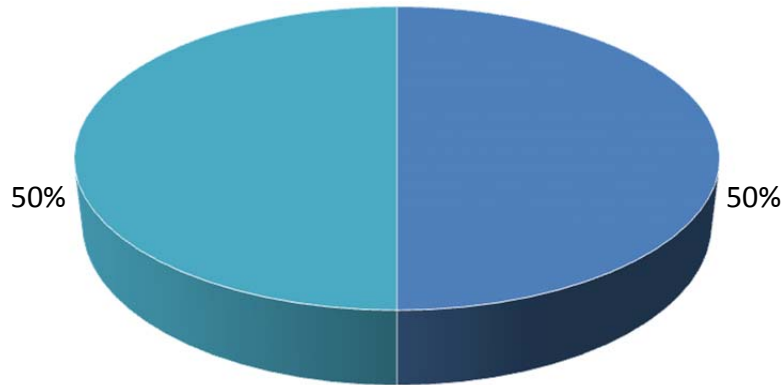
Appendix 5



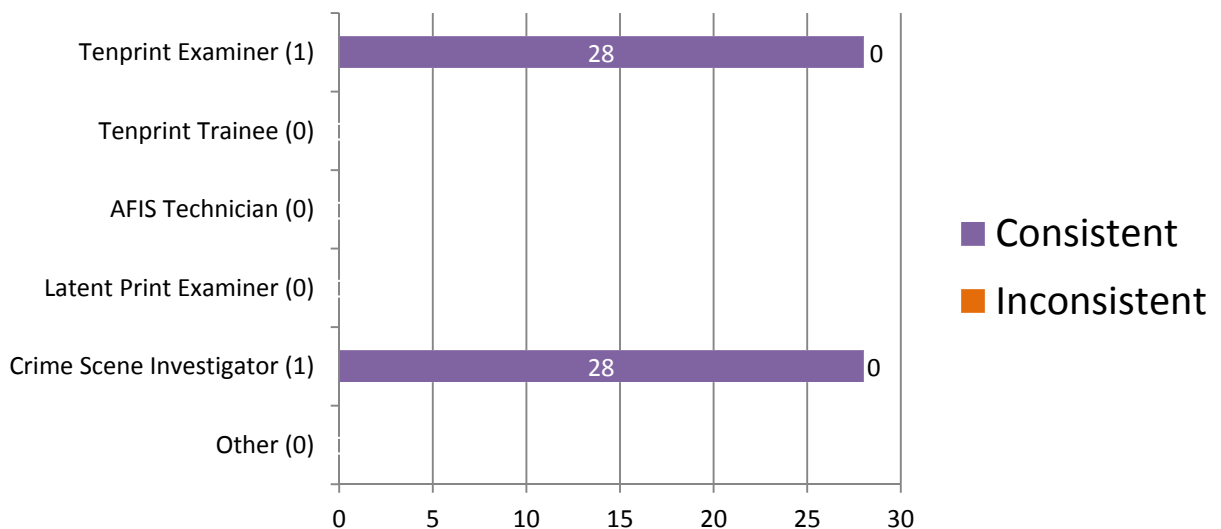
*For further information, please read **Manufacturer's Additional Observations** on the final page of this report.

Appendix 6

Percentage of Participants Based on Primary Job Position



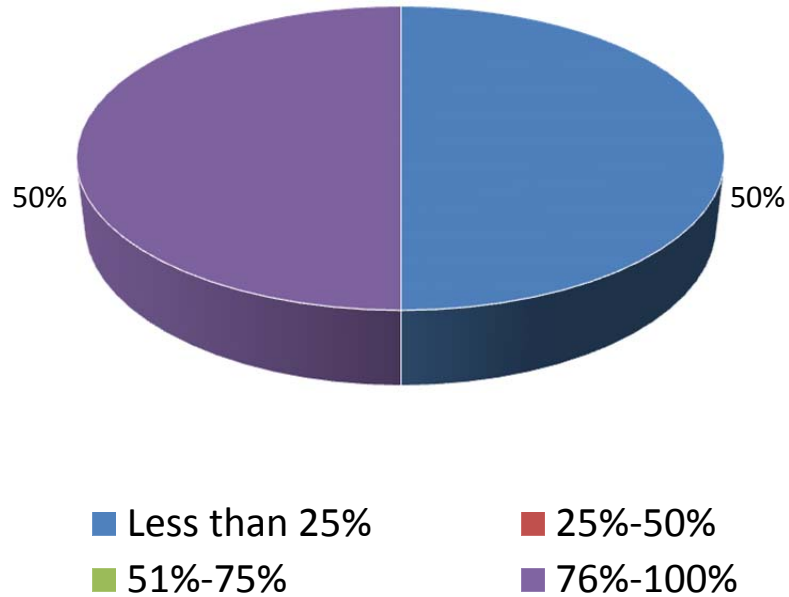
Consistent vs Inconsistent Responses Based on Primary Job Position



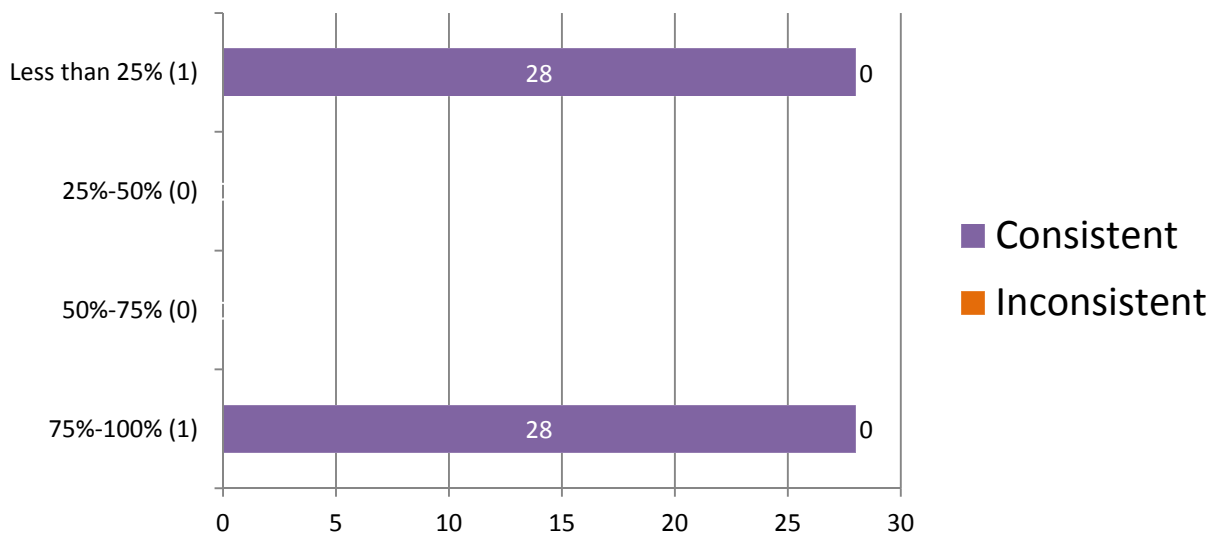
*For further information, please read **Manufacturer's Additional Observations** on the final page of this report.

Appendix 7

Percentage of Participants Based on Time Devoted to Tenprint Casework



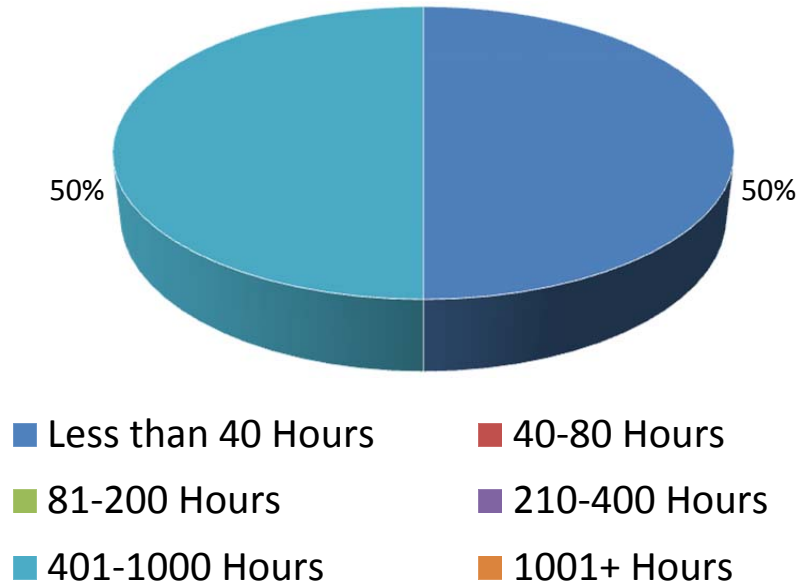
Consistent vs Inconsistent Responses Based on Time Devoted to Tenprint Casework



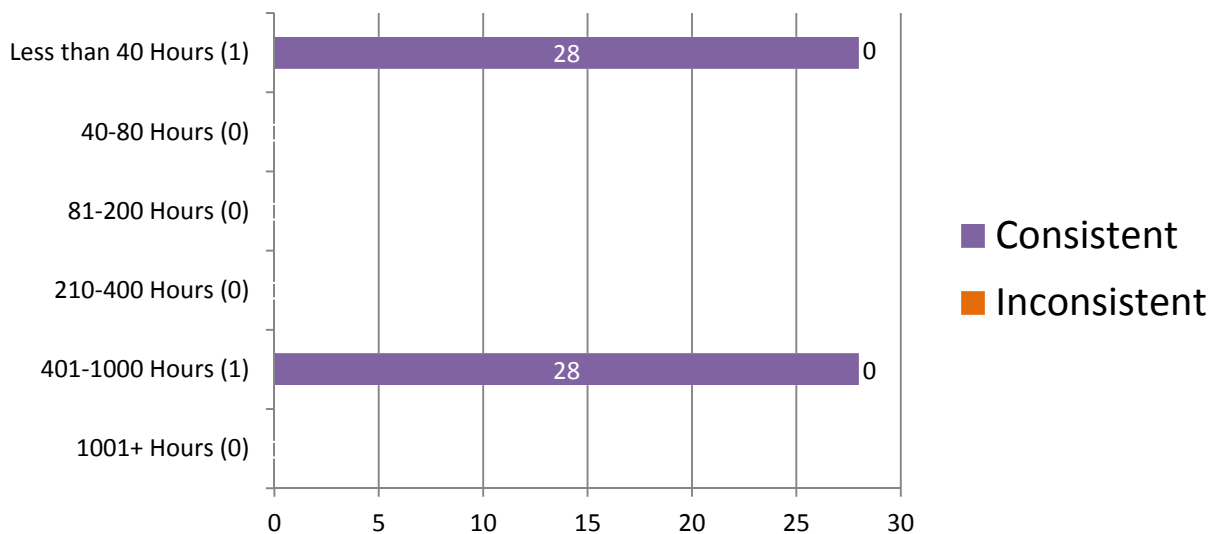
*For further information, please read **Manufacturer's Additional Observations** on the final page of this report.

Appendix 8

Percentage of Participants Based on Hours of Tenprint Training Completed



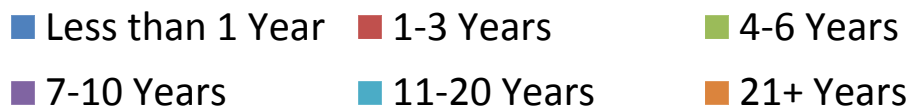
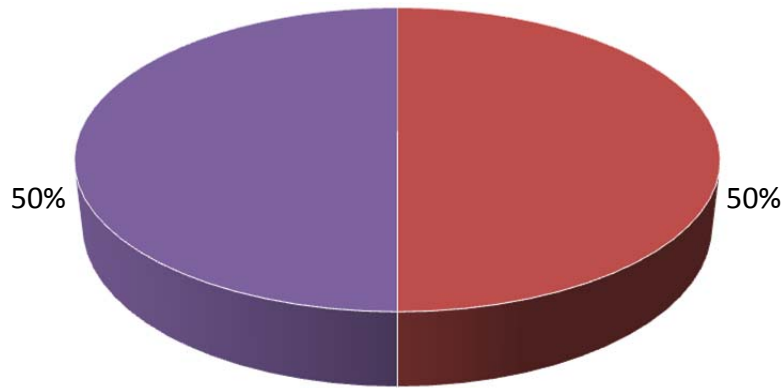
Consistent vs Inconsistent Responses Based on Hours of Tenprint Training Completed



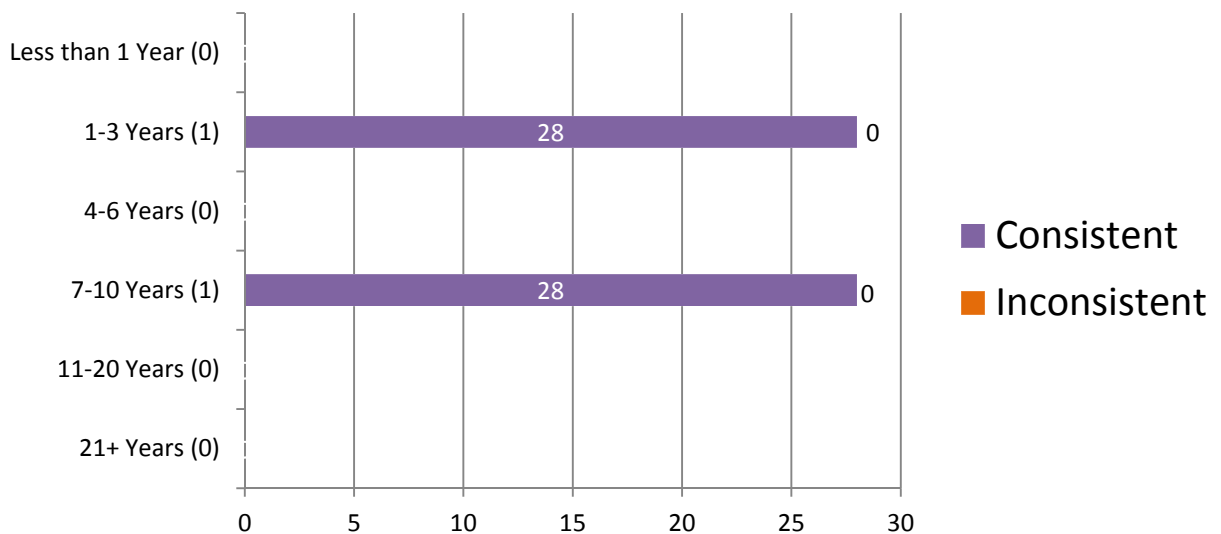
*For further information, please read *Manufacturer's Additional Observations* on the final page of this report.

Appendix 9

Percentage of Participants Based on Years of Experience in Tenprints



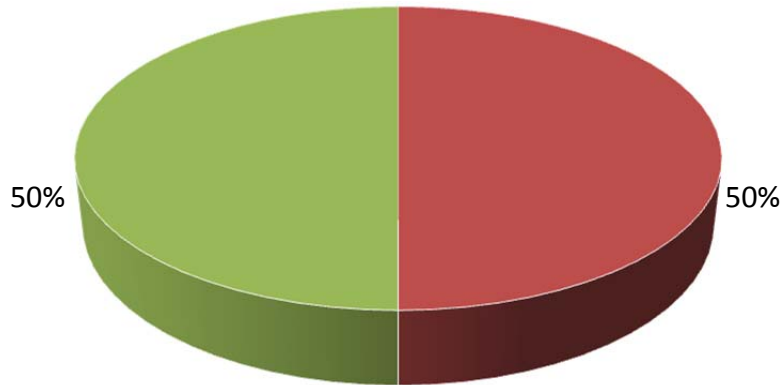
Consistent vs Inconsistent Responses Based on Years of Experience in Tenprints



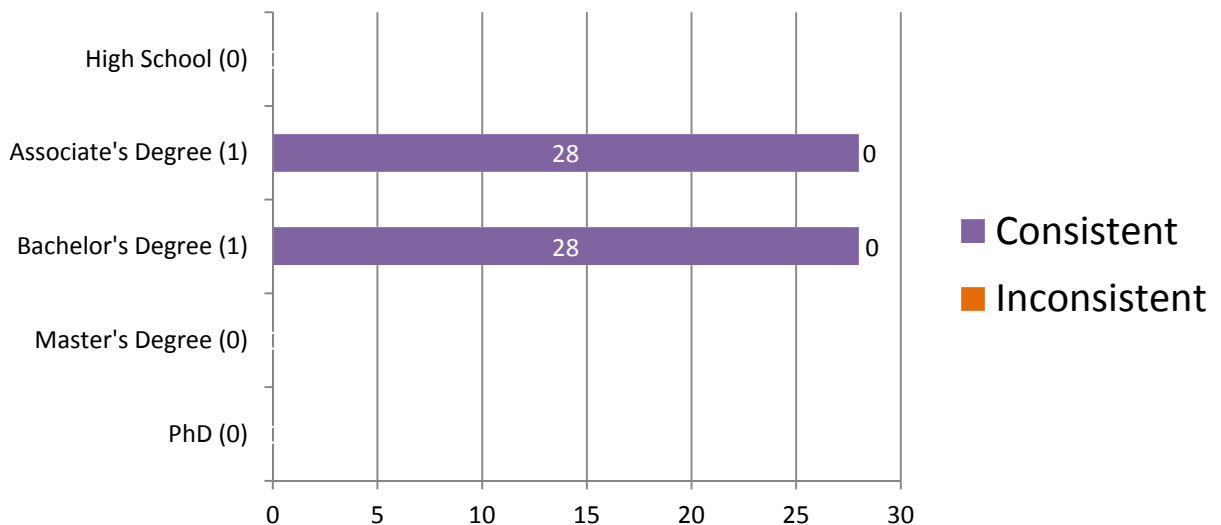
*For further information, please read **Manufacturer's Additional Observations** on the final page of this report.

Appendix 10

Percentage of Participants Based on Highest Level of Education Completed

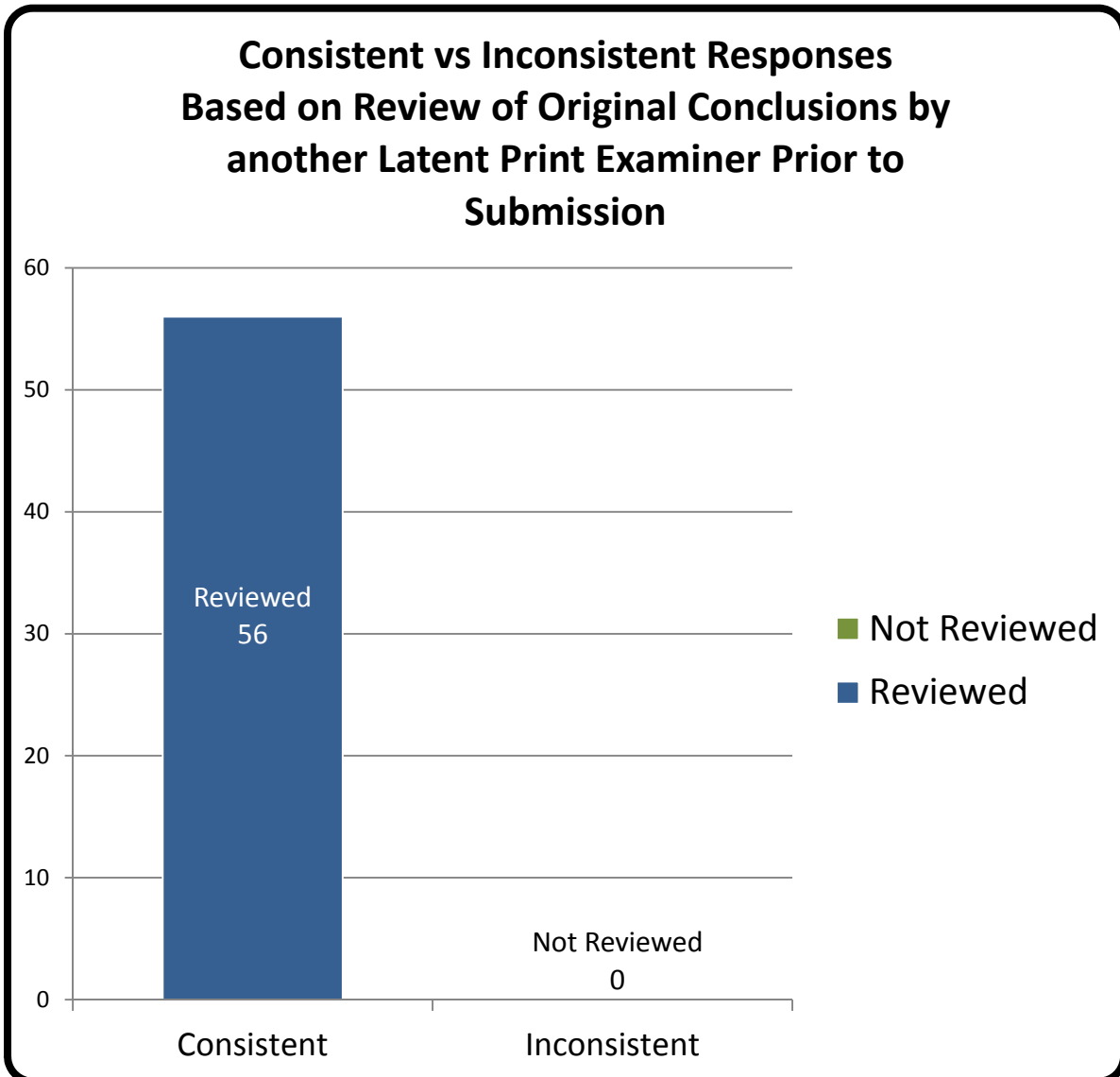


Consistent vs Inconsistent Responses Based on Highest Level of Education Completed



*For further information, please read *Manufacturer's Additional Observations* on the final page of this report.

Appendix 11



*For further information, please read ***Manufacturer's Additional Observations*** on the final page of this report.

Appendix 12

Participant Responses listed by Test Code

		Part 1																			
		1	2	3	4	5	6	7	8	9	10	11	12	13	14	15	16	17	18	19	20
	<i>Assigned Values</i>	RSL	A	RSL	W	W	W	RSL	W	LSL	LSL	RSL	W	RSL	W	LSL	W	W	LSL	LSL	RSL
Test Code	4571C16202	RSL	A	RSL	W	W	W	RSL	W	LSL	LSL	RSL	W	RSL	W	LSL	W	W	LSL	LSL	RSL
	9004K16202	RSL	A	RSL	W	W	W	RSL	W	LSL	LSL	RSL	W	RSL	W	LSL	W	W	LSL	LSL	RSL

		Part 2	Part 3		Part 4				
		Pre-Sentencing	Warrant #1	Warrant #2	1	2	3	4	5
	<i>Assigned Values</i>	MRC, PC1, PC2	SAME	NOT SAME	ID	EXC	ID	ID	EXC
Test Code	4571C16202	MRC, PC1, PC2	SAME	NOT SAME	ID	EXC	ID	ID	EXC
	9004K16202	MRC, PC1, PC2	SAME	NOT SAME	ID	EXC	ID	ID	EXC

**Arch=A, Right Slant Loop=RSL, Left Slant Loop=LSL, Whorl=W, Most Recent Conviction=MRC, Prior Conviction #1=PC1, Prior Conviction #2=PC2, Made by the same person=SAME, Not made by the same person=NOT SAME, Identification=ID, Exclusion=EXC, Inconclusive=INC, None of the above=None*

Totals

	Part 1									
	1	2	3	4	5	6	7	8	9	10
<i>Assigned Values</i>	<i>RSL</i>	<i>A</i>	<i>RSL</i>	<i>W</i>	<i>W</i>	<i>W</i>	<i>RSL</i>	<i>W</i>	<i>LSL</i>	<i>LSL</i>
Consistent Responses	2	2	2	2	2	2	2	2	2	2
Inconsistent Responses	0	0	0	0	0	0	0	0	0	0
Percentage of Consistent Responses	100%	100%	100%	100%	100%	100%	100%	100%	100%	100%

	Part 1 (continued)									
	11	12	13	14	15	16	17	18	19	20
<i>Assigned Values</i>	<i>RSL</i>	<i>W</i>	<i>RSL</i>	<i>W</i>	<i>LSL</i>	<i>W</i>	<i>W</i>	<i>LSL</i>	<i>LSL</i>	<i>RSL</i>
Consistent Responses	2	2	2	2	2	2	2	2	2	2
Inconsistent Responses	0	0	0	0	0	0	0	0	0	0
Percentage of Consistent Responses	100%	100%	100%	100%	100%	100%	100%	100%	100%	100%


	Part 2	Part 3		Part 4				
	Pre-Sentencing	Warrant #1	Warrant #2	1	2	3	4	5
<i>Assigned Values</i>	<i>MRC, PC1, PC2</i>	<i>SAME</i>	<i>NOT SAME</i>	<i>ID</i>	<i>EXC</i>	<i>ID</i>	<i>ID</i>	<i>EXC</i>
Consistent Responses	2	2	2	2	2	2	2	2
Inconsistent Responses	0	0	0	0	0	0	0	0
Percentage of Consistent Responses	100%	100%	100%	100%	100%	100%	100%	100%

Participant's Additional Comments

Test ID	Comments
	There were no additional comments.

Manufacturer's Additional Observations

There were no additional observations.

Authorized by: 
Ron Smith, President
December 1, 2016

Issue Date: **December 1, 2016**